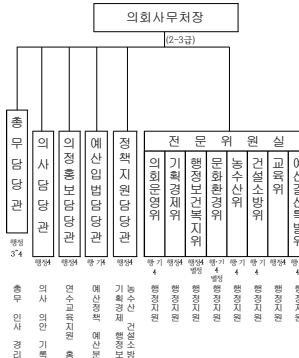


▶ **외회**

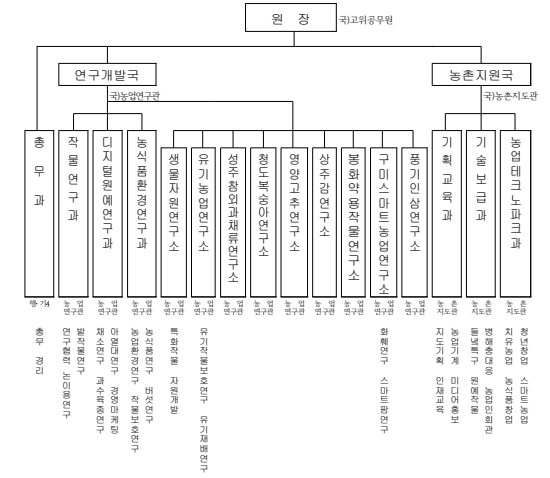
의회사무처	기구	5담당관 8전면위원
	정원	159명(의정수 : 60명)



- 운영위**
- 의회운영위(행정·과학기술4급 1)
 - 기획경제위(행정4급 1, 행정·발전5급 1)
 - 행정보건의료지원(행정·발전4급 1, 행정·발전5급 1), 문화관광지원(행정·과학기술4급 1, 행정·발전5급 1), 농수산지원(행정·과학기술4급 1, 행정·농업·발전5급 1), 건설소방지원(행정·과학기술4급 1, 행정·시설·발전5급 1), 교육지원(행정4급 1)
 - 예산감산특별위(행정·과학기술4급 1)

▶ **직속기관(28)**

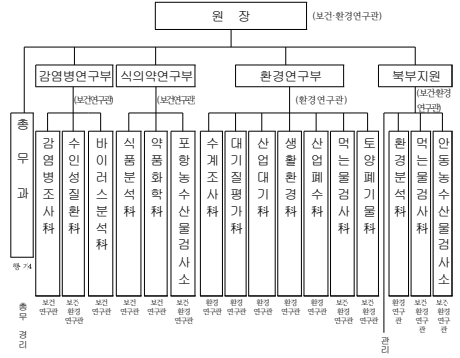
농업기술원



인재개발원



보건환경연구원



소방학교



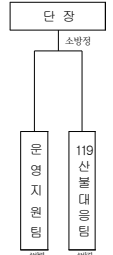
소방서 (22)



119특수대응단

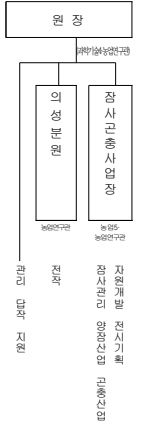


119산불특수대응단

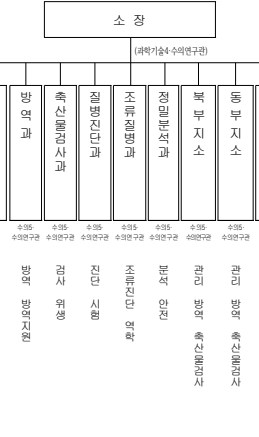


▶ **사업소(8)**

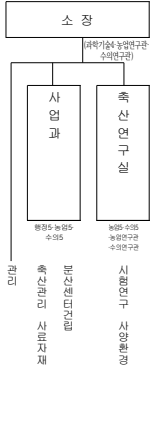
농업지원관리원



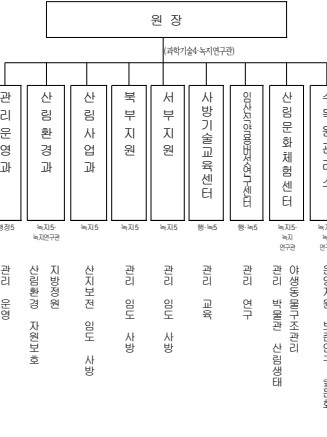
농물위생시험소



축산기술연구소



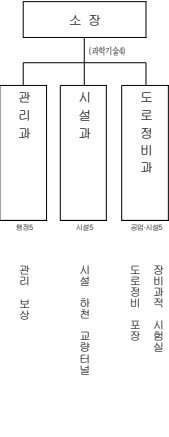
산림환경연구원



북부건설사업소



남부건설사업소



서울본부



경북도서관



▶ **합의제병정기관**

경상북도자치경찰위원회

